



Knocking at the College Door

Projections of High School Graduates by State, Income, and Race/Ethnicity

December 2003

INDIANA

The graduating class of 2008-09 is projected to be the largest in history, with some 3.2 million students. Those graduates are part of the early wave of the “baby boomlet,” children born between 1990 and 2000. During that decade, the nation’s population grew by 13.2 percent. But the number of births over that period (and the number of graduates years later) varies widely from region to region. The West saw the largest population growth among the four regions of the country, with a 19.7 percent increase in the population compared to 5.5 percent in the Northeast, 7.9 percent in the Midwest, and 17.3 percent in the South. The growth rates are now being reflected in the numbers of high school graduates. Nationally, the number of public high school graduates is projected to increase by 10.4 percent between 2001-02 and 2017-18. The growth will be unevenly distributed across the country’s four major regions, with the South looking at an 18.7 percent increase, and increases of 15.8 percent in the West, 2.7 percent in the Midwest, and .1 percent in the Northeast. Indiana’s population increased by 9.7 percent — from 5,544,159 to 6,080,485 — and the state is projected to see more public high school graduates in 2017-18 than it had in 2001-02 (see Figure 1).

Figure 1. Projected Percent Change in Number of Public High School Graduates Between 2001-02 and 2017-18

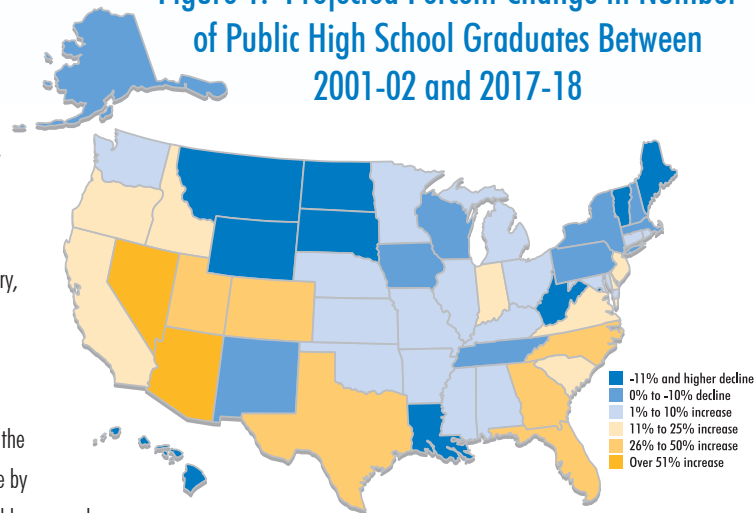
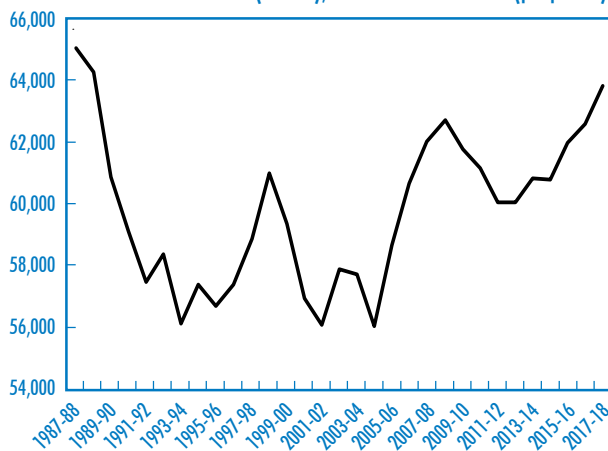


Figure 2. Indiana Public High School Graduates

1987-88 to 2001-02 (actual), 2002-03 to 2017-18 (projected)



increase to 63,245 in 2017-18, a 12.6 percent change over 2001-02. Nonpublic high school graduates accounted for 6 percent of all Indiana high school graduates in 1987-88; by 2001-02, that proportion had increased to 9.1 percent, or 5,651 nonpublic graduates. The number of nonpublic graduates is expected to increase through 2017-18 to approximately 14,500, and their share is projected to double.

Indiana was among the low- to average-growth states in the nation between 1990 and 2000, falling considerably below the national growth rate over that decade. Following a period of decline in the number of public high school graduates in the state from 1987-88 through the mid-1990s, Indiana experienced a few years of increases, ranging from 1.3 to 3.6 percent. That short growth surge, however, was followed by three more years of fewer graduates (see Figure 2). By the end of the 14-year period between 1987-88 and 2001-02, Indiana had gone from 65,013 public high school graduates to 56,156. The trend toward declining enrollments is projected to continue over the next few years; the state will see low to moderate annual increases from 2004-05 through 2008-09. The remaining years of the projection period will see some stability from year to year in the number of graduates, with periods of reduction offset by periods of growth. The number of public high school graduates is expected to

ACT™

The College Board

WICHE
Western Interstate Commission
for Higher Education

The distribution of Indiana’s public high school graduates across family income categories will shift somewhat over the next few years as the number of graduates fluctuates annually. The overall estimated change for Indiana will be evident in the gradual movement in the proportion of graduates in each income category, as the two higher income categories will account for a larger share of the public high school graduates. The state is projected to have a smaller percentage of its public high school graduates in the lowest income category of \$0 to \$20,000 in 2006-07 than in 2000-01 (a decrease of about .40 percentage point), but Indiana may see about 50 more students in this income category. The \$20,000 to \$50,001 category is also expected to experience a decline in share (approximately .45 percentage point), while also showing over 500 more graduates. The largest numerical increase is projected to occur in the \$50,001 to \$100,000 category, whose numbers will rise by approximately 1,000 while its share grows by nearly .35 percentage point. The state is expected to see over 550 more graduates in the \$100,001 and above category. How will Indiana’s student population stack up when compared to the nation’s and the Midwest’s? In the Midwest region in 2006-07, 13.2 percent of public high school graduates are projected to fall in the \$0 to \$20,000 category. The \$20,001 to \$50,000 category is expected to have 32.8 percent, while the \$50,001 to \$100,000 category is projected to have the largest share at 39.6 percent. The \$100,001 and above category is expected to have the remaining 14.5 percent of public graduates. Nationally that year, 16.3 percent of public high school graduates are expected to be in the lowest median family income category. Another 33.4 percent is estimated to fall in the \$20,001 to \$50,000 category. The \$50,001 to \$100,000 category is expected to account for 35.1 percent of public high school graduates in 2006-07, and the remaining 15.2 percent are projected in the category of \$100,001 and over. Figure 3 shows the projected distribution of public high school graduates across the four income groups in 2012-13 for Indiana and the nation.

Figure 3. Public High School Graduates by Median Family Income 2012-13 (projected)

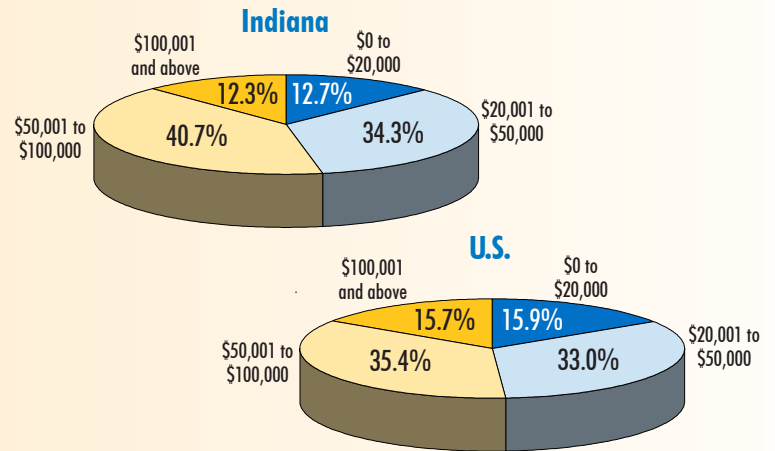
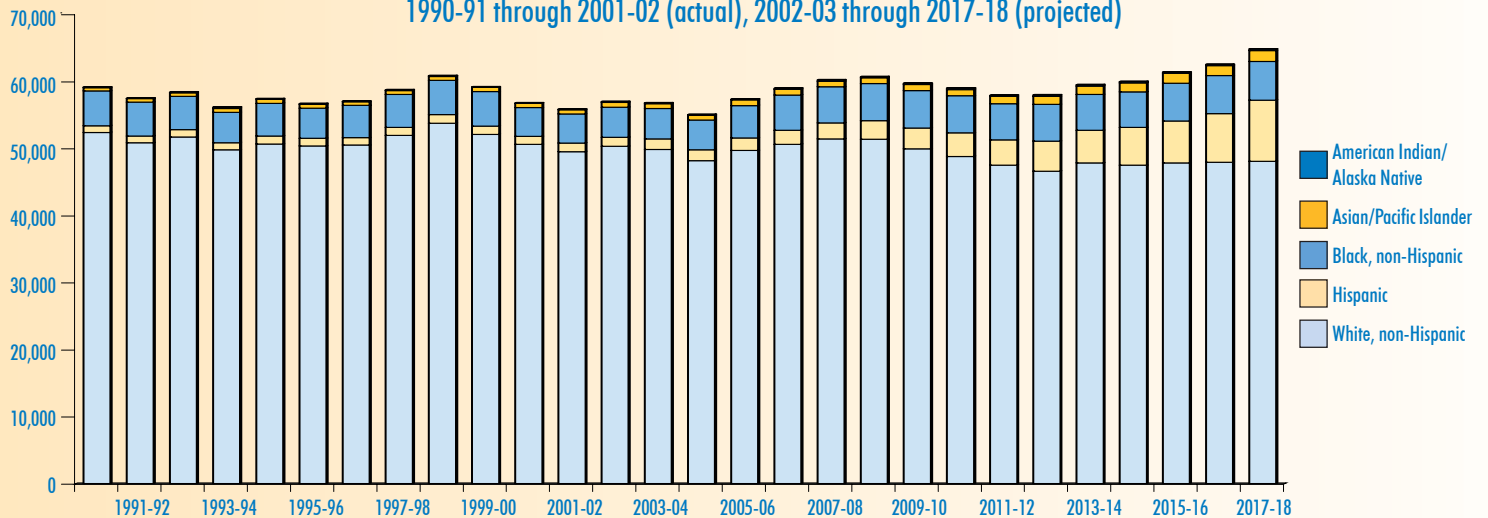


Figure 4. Indiana Public High School Graduates by Race/Ethnicity 1990-91 through 2001-02 (actual), 2002-03 through 2017-18 (projected)



During the early 1990s, underrepresented racial/ethnic groups accounted for approximately 11 percent of all public high school graduates in Indiana. That proportion remained very stable throughout the decade to 2001-02 but is projected to increase through the projection period, reaching approximately 19 percent by 2013-14. Among these minority groups, Black, non-Hispanics made up the largest share. In the 1990-91 graduating class, there were nearly 5,200 Black, non-Hispanics, who accounted for 8.8 percent of the class; their numbers decreased to 4,331, and their representation fell slightly, to 7.7 percent, in 2001-02. By 2013-14, this group is forecast to grow to about 5,300 graduates and represent 9 percent. The second largest group has been Hispanics, with nearly 1,000 (1.7 percent of all public school graduates) in the class of 1991 and close to 1,300 in 2002. By 2013-14, that number is expected to reach nearly 4,900 and represent about 8 percent of the class. The proportion of each graduating class that was Asian/Pacific Islander was stable at around 1 percent between 1990-91 and 2001-02; that percentage is expected to increase through the projection period until 2013-14. White, non-Hispanic students were 88.6 percent of the graduating class of 1991; that proportion remained stable over the decade and is projected to decline to approximately 79 percent in the class of 2014.